

TAP

Transformative Actions Program

TAP the potential of local and subnational climate action!

www.tap-potential.org



● ICLEI - the global cities network

ICLEI - Local Governments for Sustainability is the world's leading network of **over 1,000 cities, towns and metropolises** committed to building a sustainable future. Established in 1990.

MISSION

is to build and serve a worldwide movement of local governments to achieve tangible improvements in global sustainability, with a specific focus on environmental conditions through cumulative local actions.



10 Agendas:

- Sustainable City – the overall goal –
- Low-carbon City
- Resource-efficient & Productive City
- Resilient City
- BiodiverCity
- Smart City
- EcoMobile City
- Happy, Healthy & Inclusive Communities
- Sustainable Local Economy & Procurement
- Sustainable City-Region Cooperation

● Global Initiatives / Networks

- carbonn Climate Registry



- Compact of Mayors



- Transformative Action Program (TAP)



- 100% Renewable Energy Cities & Regions Network



- District Energy in Cities (DEC)



- Building EBuilding Efficiency Accelerator (BEA)



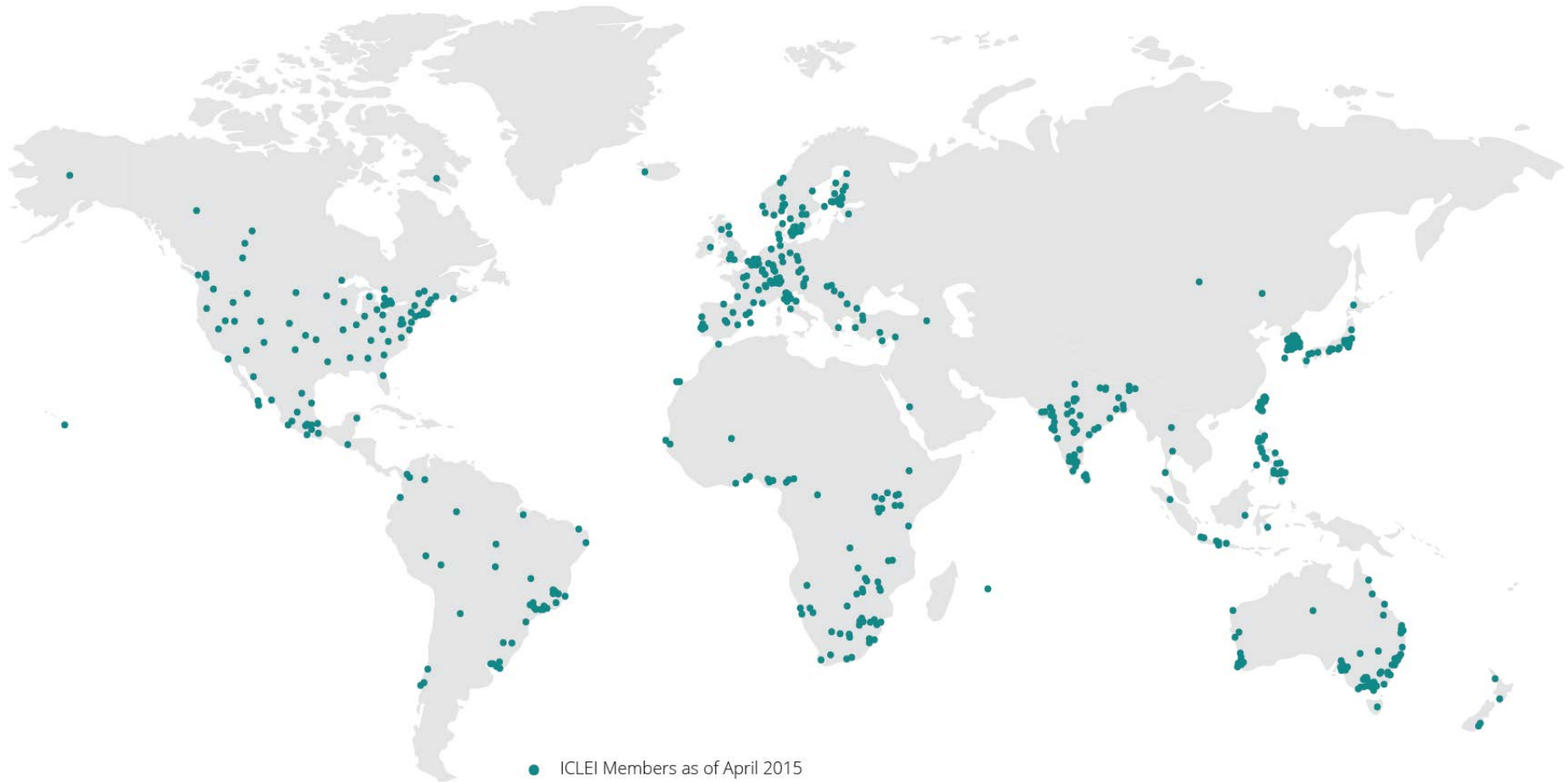
- Eco Mobility Alliance



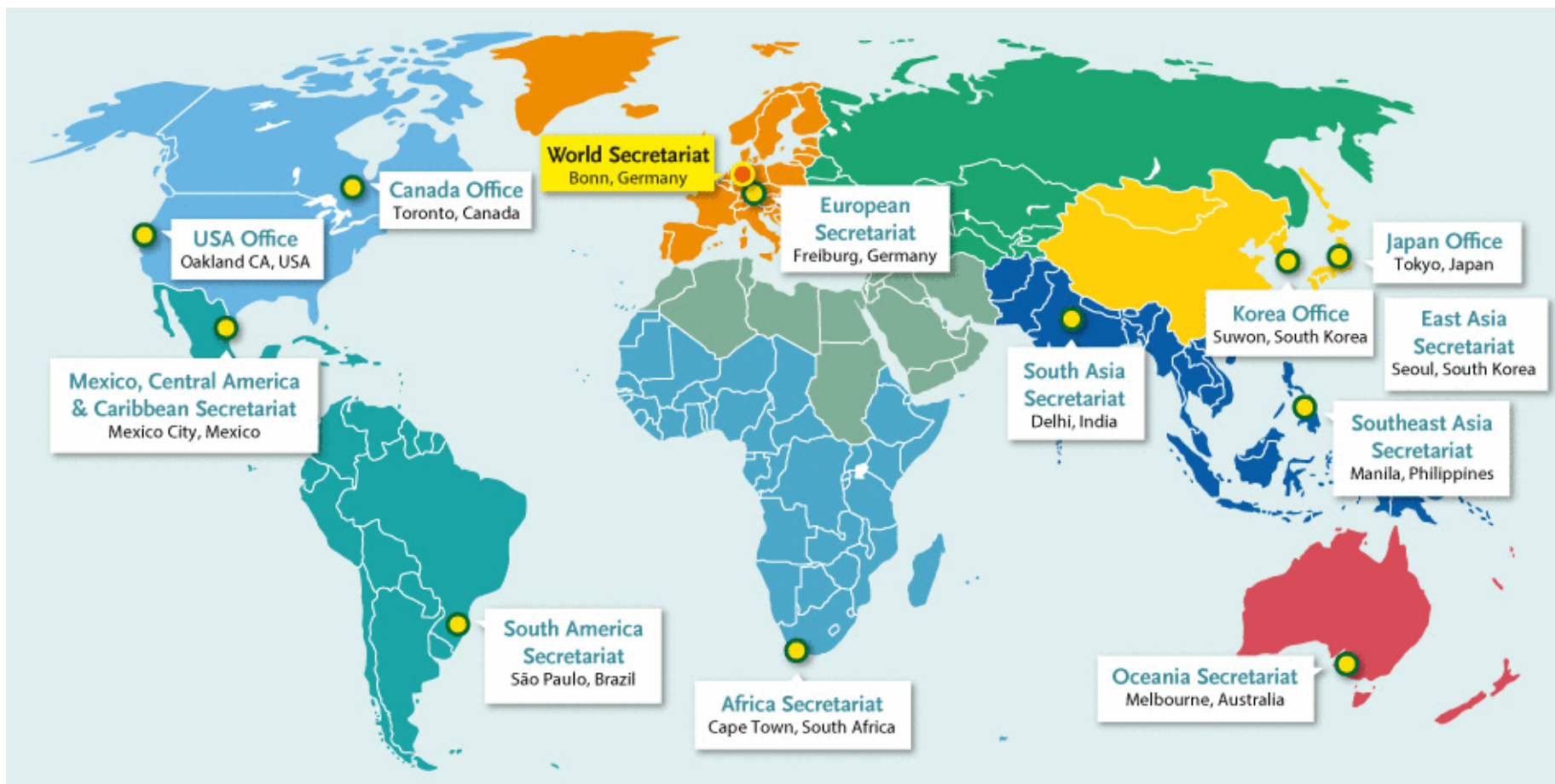
- Global Lead Cities Network on Sustainable Public Procurement (GLCN on SPP)



● ICLEI members



● ICLEI around the world



TAP

Transformative
Actions
Program

I.C.L.E.I
Local
Governments
for Sustainability

C40
CITIES
CLIMATE LEADERSHIP GROUP

UCLG
CGLU

I.C.L.E.I
Local
Governments
for Sustainability

afcd
AGENCE FRANÇAISE
DE DÉVELOPPEMENT

gef

R20

EURO
CITIES

aimf

WWF

Global
Infrastructure
Basel

Partnership on Sustainable
Low Carbon Transport

IGES
Institute for Global
Environmental Strategies

FMDV
Supporting local authorities
to access funding

THE CLIMATE GROUP

carbonn
Climate Registry

Local Government
Climate Roadmap

- 10 year program to support climate investment in urban areas
- **Raise ambition** and **accelerate transformative actions** towards low-carbon and resilient society
- **Raise visibility**, **mobilize key actors** and increasing access to finance

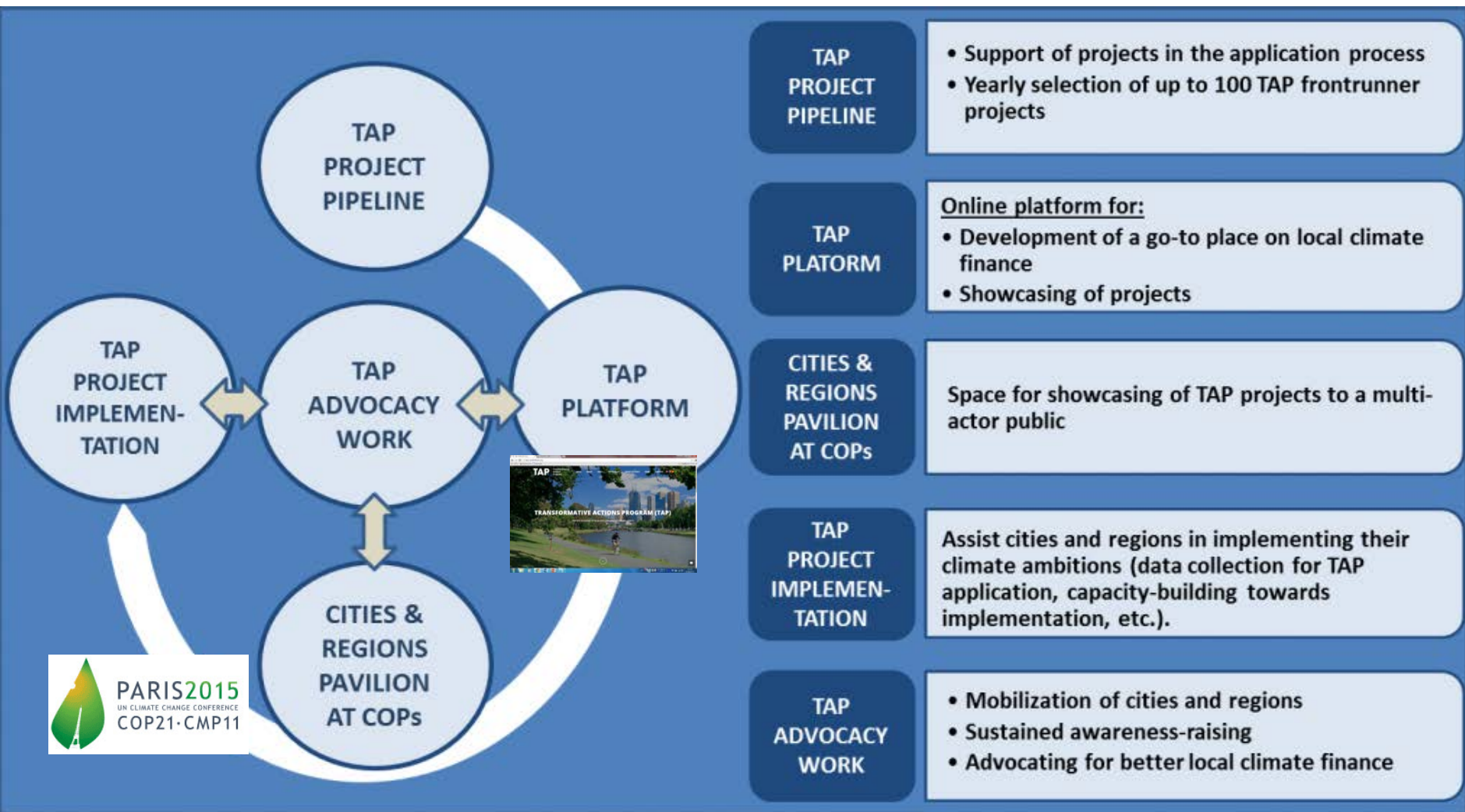
Program

- Selection of TAP projects / action plans (100 each year)
- Visibility, information, communication through online platform
- Promotion at COP and other opportunities (TAP Pavilion @ COP21)

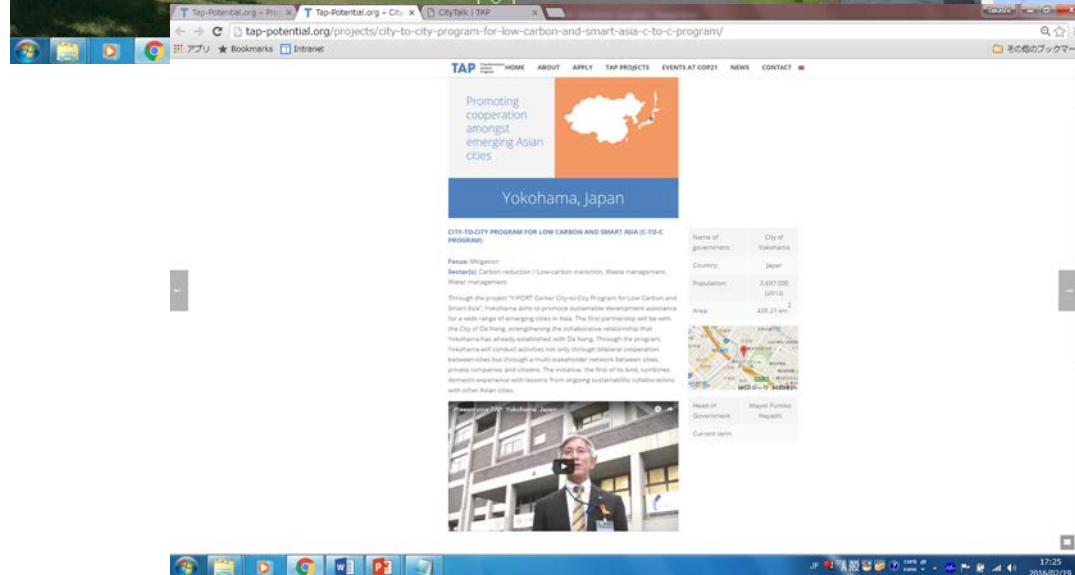
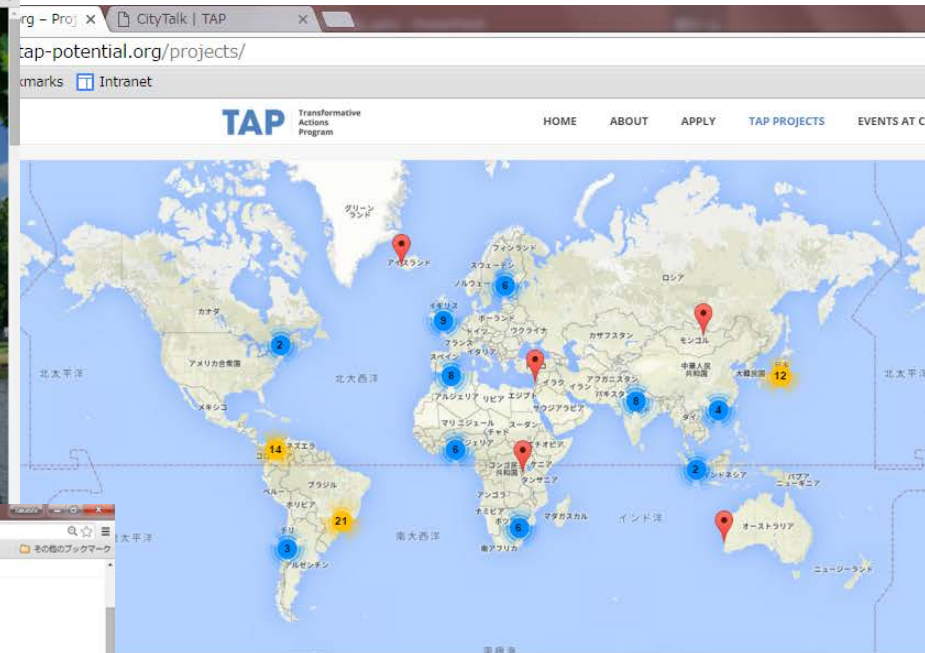
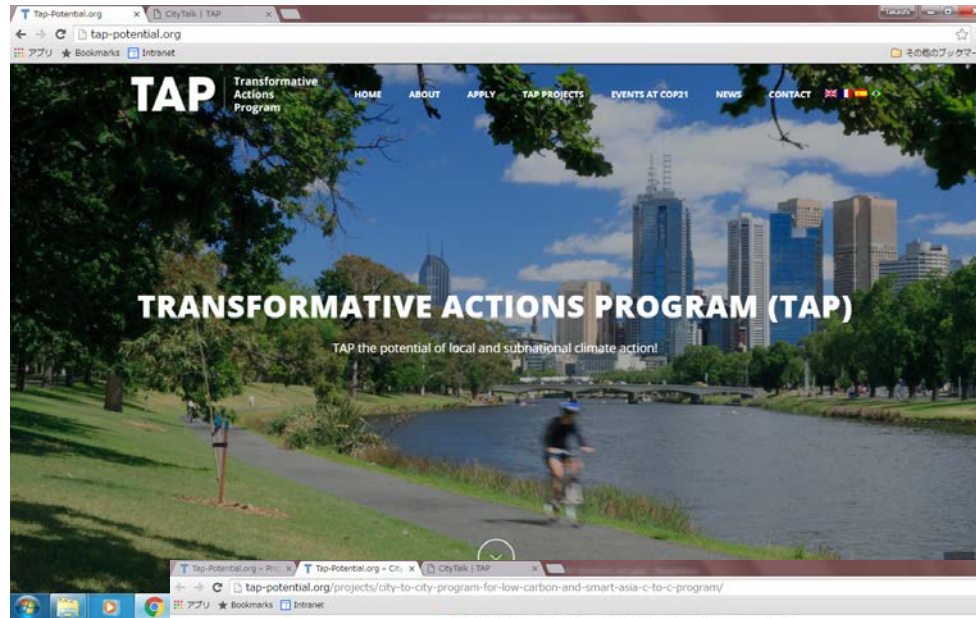
Transformative potential (selection criteria)

- **Ambitious** (first-time, scale-up), **Cross-cutting** (people, place, planet), **Inclusive** (city administration, civil society, multi-level governance, business)

The Five TAP Action Pillars



TAP Platform <http://tap-potential.org/>



Cities & Regions Pavilion – TAP2015 @COP21



PLAN 100 000 LOGEMENTS

TAP

Transformative
Actions
Program

Facilitating the
retrofitting of
1,400,000
houses by 2050



Nord-Pas-de-Calais, France

Name of government: Region of Nord-Pas-de-Calais

Country: France

Population: 4,052,000 (2013)

Area: 12,414 km²



RÉGION
NORD-PAS DE CALAIS

Focus: Mitigation


Sector(s): Carbon reduction /
Low-carbon transition

- Over 65 percent of houses date from before 1975, and 80 percent from before 1990.
- Regional plan for environmental and low-energy housing refurbishment.
- Contributes to reaching “Factor 4” in the region – being twice as productive with half the resources – as well as creating and maintaining thousands of jobs locally.

ENERGY EFFICIENCY FOR EVERYONE: BRISTOL'S BILLION: SCALING UP INVESTMENT

TAP | Transformative
Actions
Program

Refurbishing
56,000 homes
to reduce
domestic
energy use



Bristol, UK

Name of government:

Bristol City Council

Country: United Kingdom

Population: 432,000 (2012)

Area: 112 km²



Focus: Mitigation

Sector(s): Carbon reduction /
Low-carbon transition

- Energy use reduction by 30% by 2020 (from 2005); carbon emission reduction by 40% by 2020 and 80% by 2050.
- Domestic energy efficiency is the key, which accounts for 40% of emissions.
- Time to scale-up based on the success over the past 15 years.
- 56,000 homes will be refurbished - estimated reductions in domestic energy use of 11%.

TOKYO CAP-AND-TRADE PROGRAM

TAP Transformative
Actions
Program

Expanding
successful Cap
and Trade
emissions
program

Tokyo, Japan

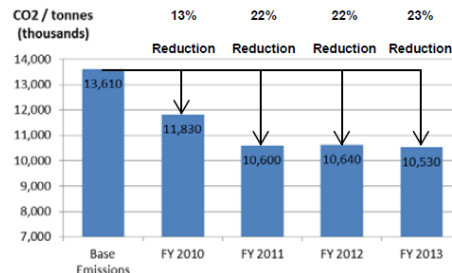
Name of government:

Tokyo Metropolitan Government

Country: Japan

Population: 13,286,735 (2013)

Area: 2122 km²



Focus: Mitigation

Sector(s): Carbon reduction /
Low-carbon transition

- GHG emissions reduction target of 25% below 2000 levels by 2020
- Launched Cap and Trade Program in 2010
- 1st phase (2010-2014) to reduce CO₂ emissions by 6-8 % from all large facilities.
- Achieves 23% reduction after 4th year.
- 2nd phase (2015-2019) requires more aggressive 15–17% reductions

GROWSMARTER

TAP | Transformative
Actions
Program

Introducing 12
smart solutions
including
electric vehicles
and bikes



Stockholm, Sweden

Name of government:

City of Stockholm

Country: Sweden

Population: 917,297 (2015)

Area: 216 km²

Focus: Mitigation

Sector(s): Carbon reduction / Low-carbon transition, ICT & smart data, Smart city

- Aiming to become completely fossil-fuel free by 2040.
- Taking part in GrowSmarter, a Horizon 2020 project EU drives to develop smart cities.
- Cities and industry to demonstrate and integrate the uptake of 12 smart solutions
- Introduce electric vehicles; pursue energy efficient renovation; and use waste heat in the district heating system.

DO YOU KYOTO?

TAP | Transformative
Actions
Program

Encouraging
citizens to
participate in
sustainability
initiatives



Kyoto, Japan

Name of government:

Kyoto City

Country: Japan

Population: 1,470,742 (2013)

Area: 828 km²



Focus: Mitigation

Sector(s): Carbon reduction / Low-carbon transition, Education / Social & governance innovation

- “DO YOU KYOTO?” means “are you doing something for the environment?”
- The Children Eco-lifestyle Challenge, critical thinking of environmental footprint, is implemented at all elementary schools.
- Help lifestyle change - “No Car Day,” “Lights Down,” and “Kyoto Light Dinner” on every 16th of each month.

CATBALOGAN SKY CITY MEGA PROJECT

TAP | Transformative
Actions
Program

Creating a new
sustainable "Sky
City" as a model
for the future



Catbalogan, Philippines

Name of government: City Government of Catbalogan City

Country: Philippines

Population: 94,317 (2010)

Area: 274 km²



Focus: Adaptation

Sector(s): Adaptation / Resilience / Disaster risk reduction, Urban planning & design

- 80 percent of Catbalogan's old city is at risk from landslides, storms and floods.
- Building a new city, called Sky City, on 440 hectares of land 120 meters above sea level.
- Walking and biking to reduce transport emissions.
- Power will come entirely from renewable sources (geothermal, wind, hydro and solar).

ECOLOGIST CITY OF JAMBI

TAP | Transformative
Actions
Program

Reducing
pollution and
protecting
biodiversity



Jambi City, Indonesia

Name of government:

Jambi City

Country: Indonesia

Population: 732.479 (2015)

Area: 169 km²



Focus: Adaptation, Mitigation

Sector(s): Adaptation / Resilience /
Disaster risk reduction, Carbon
reduction / Low-carbon
transition

- Steadfast economic growth and population growth.
- Launched a comprehensive climate plan focused on a transformation into an “Ecologist City”.
- Pollution and biodiversity conservation – healthy, livable and resilient: through cross-departmental coordination of pollution control and other policies.

More Potentials in the Region!

M Fwd: 【応募】 契約スタ... x Tap-Potential.org - Proj x Takashi

tap-potential.org/projects/

アプリ Bookmarks Intranet その他のブックマーク

TAP Transformative Actions Program

HOME ABOUT APPLY TAP PROJECTS EVENTS AT COP21 NEWS CONTACT

The map displays global project locations with numbered markers. Red location pins are placed on several countries, while blue and yellow circular markers with numbers are placed on others. The countries labeled include: グリーンランド, アイスランド, フィンランド, スウェーデン, ノルウェー, イギリス, ポーランド, ドイツ, フランス, ス페인, イタリア, アルジェリア, リビア, エジプト, マリニジェール, チェリヤ, コンゴ民主共和国, ケニア, タンザニア, アンゴラ, ナミビア, ボツワナ, 南アフリカ, ロシア, カザフスタン, モンゴル, 中華人民共和国, 大韓民国, アフガニスタン, イラン, パキスタ, タイ, インドネシア, バルバドス, ニューギニア, オーストラリア, ニュージーランド, カナダ, 合衆国, メキシコ, ネズエラ, ブラジル, ペルー, ホリビア, チリ, アルゼンチン.

北太平洋 北大西洋 南太平洋 南大西洋 インド洋

Google

Tokyo_CAT_4th_....pdf

すべてのダウンロードを表示

20:56
2016/02/19

More Potentials in the Region!

Ambitions for sustainable city planning are there:

- **Cities and Regions** - register sustainability plans/projects
- **ICLEI** - make TAP information more visible
- **Development partners** - find opportunities for technical assistance, capacity building and funding

for further accelerating transformative actions.

Thank you very much for your attention!

Contact:

Takashi Otsuka

Director, Japan Office

ICLEI – Local Governments for Sustainability

Web: www.iclei.org

E-mail: takashi.otsuka@iclei.org